

Veraviewepocs 3D F80

- Exceptional image clarity
- Multifunctional: 3D, panoramic & cephalometric
- Enhanced patient safety with Dose Reduction Feature
- Three options for easy & accurate 3D positioning
- Seven pre-programmed panoramic functions with magnification options
- Fast scan times: 7.4 second panoramic; 9.4 second 3D scan
- FOV: Ø 40 x H 40 mm, Ø 40 x H 80 mm, Ø 80 x H 50 mm, Ø 80 x H 80 mm

Thinking ahead. Focused on life.



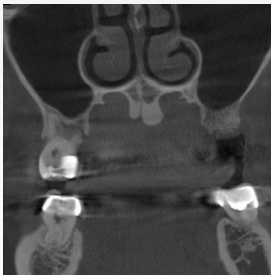
Fields of View

The Veraviewepocs 3D F80 model offers a total of 4 exposure areas from Ø 40 x H 40 mm up to Ø 80 x H 80 mm with reduced dose, yet exceptional clarity. This model's small and medium fields of view are well suited for endodontics, periodontics, and general dentistry.

Ø 80 FOV



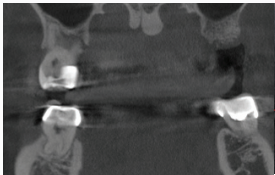
Ø 40 FOV



Ø 80 x H 80 mm



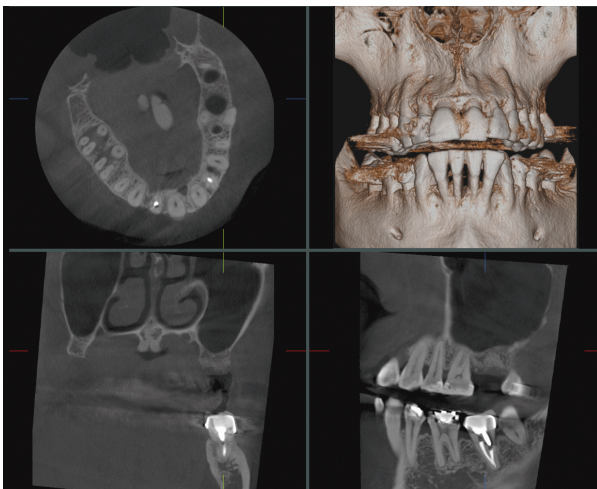
Ø 40 x H 80 mm



Ø 80 x H 50 mm



Ø 40 x H 40 mm



Largest imaging area, Ø 80 x H 80 mm.

A portion of the clinical images provided by Dr. Bruno Azevedo, Assistant Professor, University of Louisville School of Dentistry.

Specifications

Trade name:	Veraviewepocs 3D
Model:	X550
Type:	EX-1
Unit configurations:	Veraviewepocs 3D F80 Pan/Ceph
Input voltage:	EX-1: AC 120V 60 Hz
Power consumption:	2.3 kVA
Dimensions	
Main unit:	W 1,020 x D 1,300 x H 2,355 mm
With Cephalometric:	W 2,000 x D 1,300 x H 2,355 mm
Weight:	Approx. 190 kg Approx. 260 kg with Cephalometric
X-ray generator	
Tube voltage:	60-90kV (depending on exposure mode)
Tube current:	1-10mA (depending on exposure mode)
Effective focal spot:	0.5 mm
3D image	
Exposure time:	Approx. 9.4 seconds
3D F80 imaging area:	Ø 40 mm x H 40 mm Ø 40 mm x H 80 mm Ø 80 mm x H 50 mm Ø 80 mm x H 80 mm
Cephalometric	
Exposure time:	2.6 - 5.8 seconds
Panoramic image	
Exposure time:	High speed mode: Approx. 7.4 sec.

Imaging Programs			
Panoramic		Magnification ratio	
Standard Panoramic	standard, orthogonal & shadow reduction projections	1.3 X throughout	1.6 X throughout
Pedodontic Panoramic	standard, orthogonal & shadow reduction projections	1.3 X throughout	1.6 X throughout
Maxillary Sinus Panoramic	posterior & anterior		1.5 X throughout
TMJ Quadruple Image		1.3 X throughout	
Partial Panoramic		1.3 X throughout	

Veraviewepocs 3D F80 is available only in Canada.